

Radar Level Meter

KWLRW Series

The Ketwells, KWLRW Series Radar Level Meter is a non-contact liquid level measuring instrument based on high-frequency millimeter wave technology, designed for high-precision water level monitoring needs. The product adopts advanced FMCW (Frequency Modulated Continuous Wave) radar technology (76-81GHz), with high measurement accuracy, strong anti-interference ability, good environmental adaptability and other characteristics, and is widely used in water conservancy and hydrology, urban drainage, industrial process control and other fields.



Applications

- Rivers
- Lakes
- Reservoirs
- Cisterns
- Wells
- Tanks



Feature

- Shorter wavelength, better signal reflection, small beam angle, concentrated energy, enhanced echo and avoidance of damage
- Less interference, more convenient installation
- Integrated lens design, compact size
- Small blind spot, especially suitable for use in short distances
- High signal-to-noise ratio, high performance under unstable wave conditions
- Intelligent functions are designed to make life easier, communicating through Bluetooth wireless technology, convenient for on-site
- Maintenance

Radar Level Meter

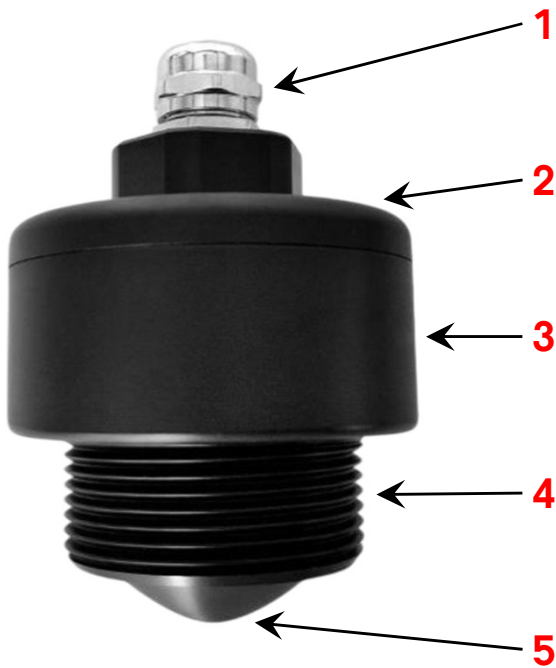
KWLRW Series

Technical Data

Model Type	Output 4... 20mA	RS485 Communication
		
Frequency Range	76GHz... 81GHz	
Measuring Range	65m	
Measurement Accuracy	±1mm	
Measurement Interval	800ms	500ms
Power Supply	18... 28VDC	9... 28VDC
Power Consumption	20mA	15mA
Communication	4... 20mA/HART	RS485/ MODBUS
Shell Material	Stainless Steel, PP	Stainless Steel, PP
Beam Angle	6°	
Blind Area	0.1m at 12m, 0.3m at 65m	
Protection	IP68	
Process Temperature	-30°C... 70°C	
Process Pressure	-0.1... 0.1mpa	
Debug	PC Host computer/IOS Android	
Wireless Communication	Bluetooth 5.0	
Bluetooth Range	12m	
Installation Method	Bracket, Thread	
Cable	Cable Length 10m	

Model Selection

Series	KWLRW			
Measuring Range		1	65m	
Communication		1	4... 20mA/HART	
		2	RS485/MODBUS	
Shell Material		PP	Polypropylene	
		SS	Stainless Steel 304	
Power Supply		DC	24 VDC	



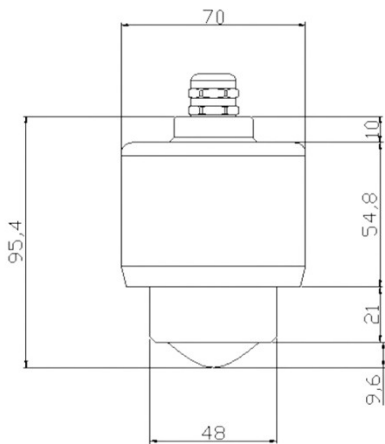
Polypropylene (PP)



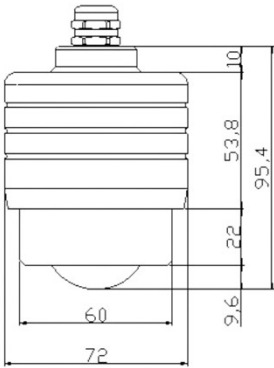
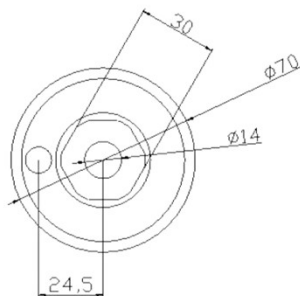
Stainless Steel

- 1. Cable Entry Interface
- 2. Spirit Level
- 3. Shell
- 4. PP (G1-1/2 Thread), Stainless Steel (G2 Thread)
- 5. Antenna Part

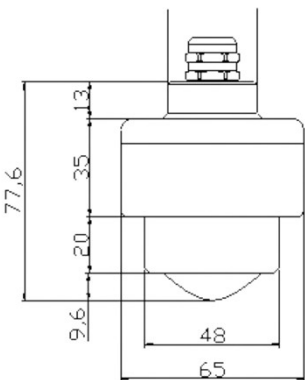
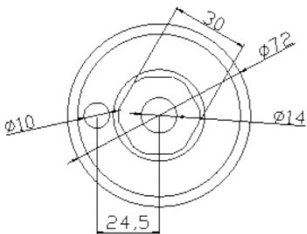
Structure Diagram



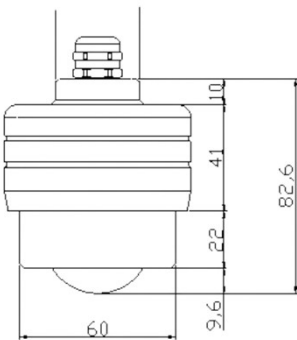
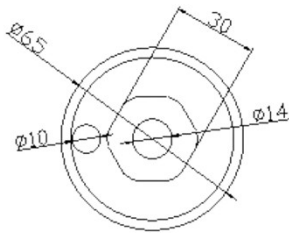
Model Type 4-20mA
Polypropylene (PP)



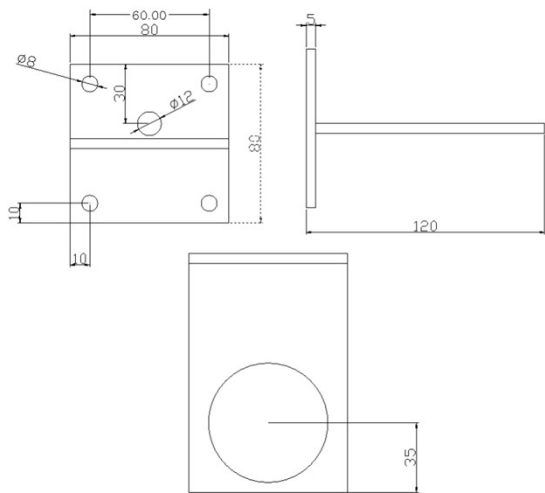
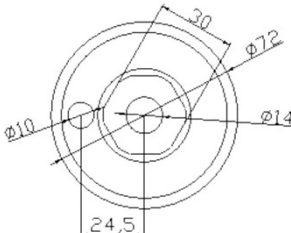
Model Type 4-20mA
Stainless Steel



Model Type RS485
Polypropylene (PP)



Model Type RS485
Stainless Steel



Bracket Size Chart